

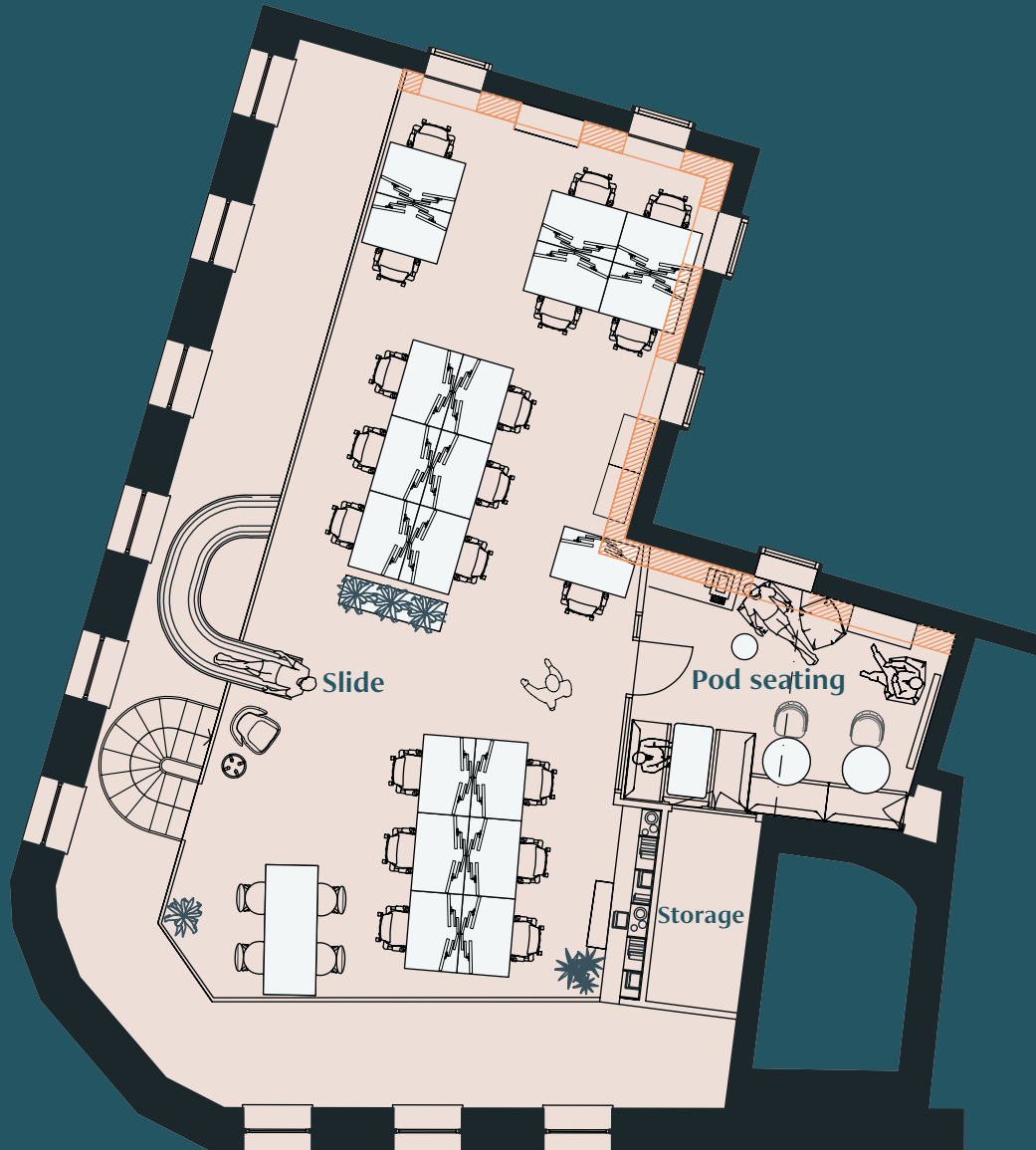
FLOOR 4* – Layout 1

1,457 sq ft / 135.4 sq m

- Workstations 20
- Meeting rooms (4 person) 2
- Kitchen
- Break-out space

*Dual space. 4 & 5 Floors to be let together.

Floorplans are not to scale, are indicative only and subject to change.



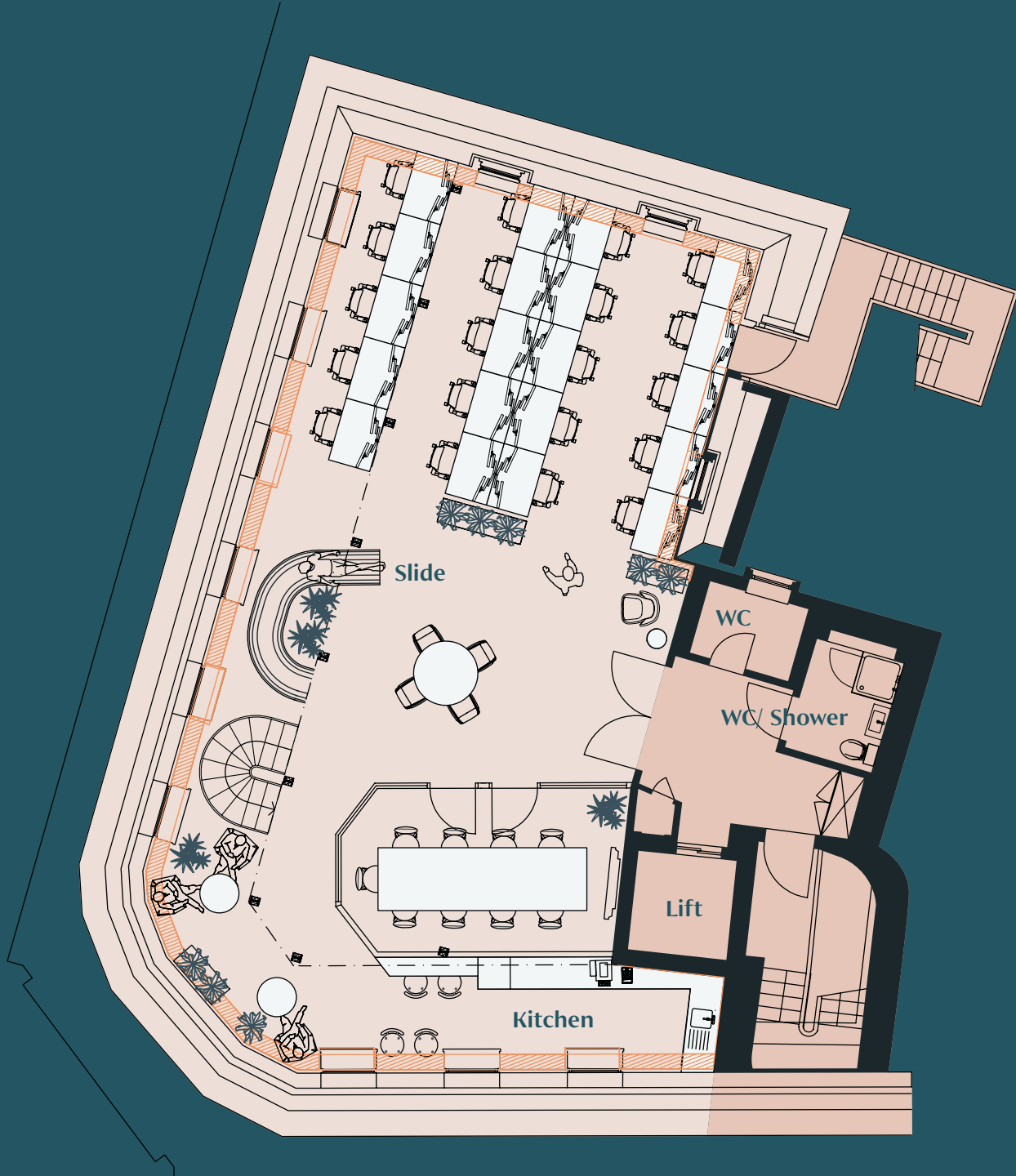
FLOOR 5* – Layout 1

1,000 sq ft / 92.9 sq m

- Workstations 18
- Break-out seating area

*Dual space. 4 & 5 Floors to be let together.

Floorplans are not to scale, are indicative only and subject to change.



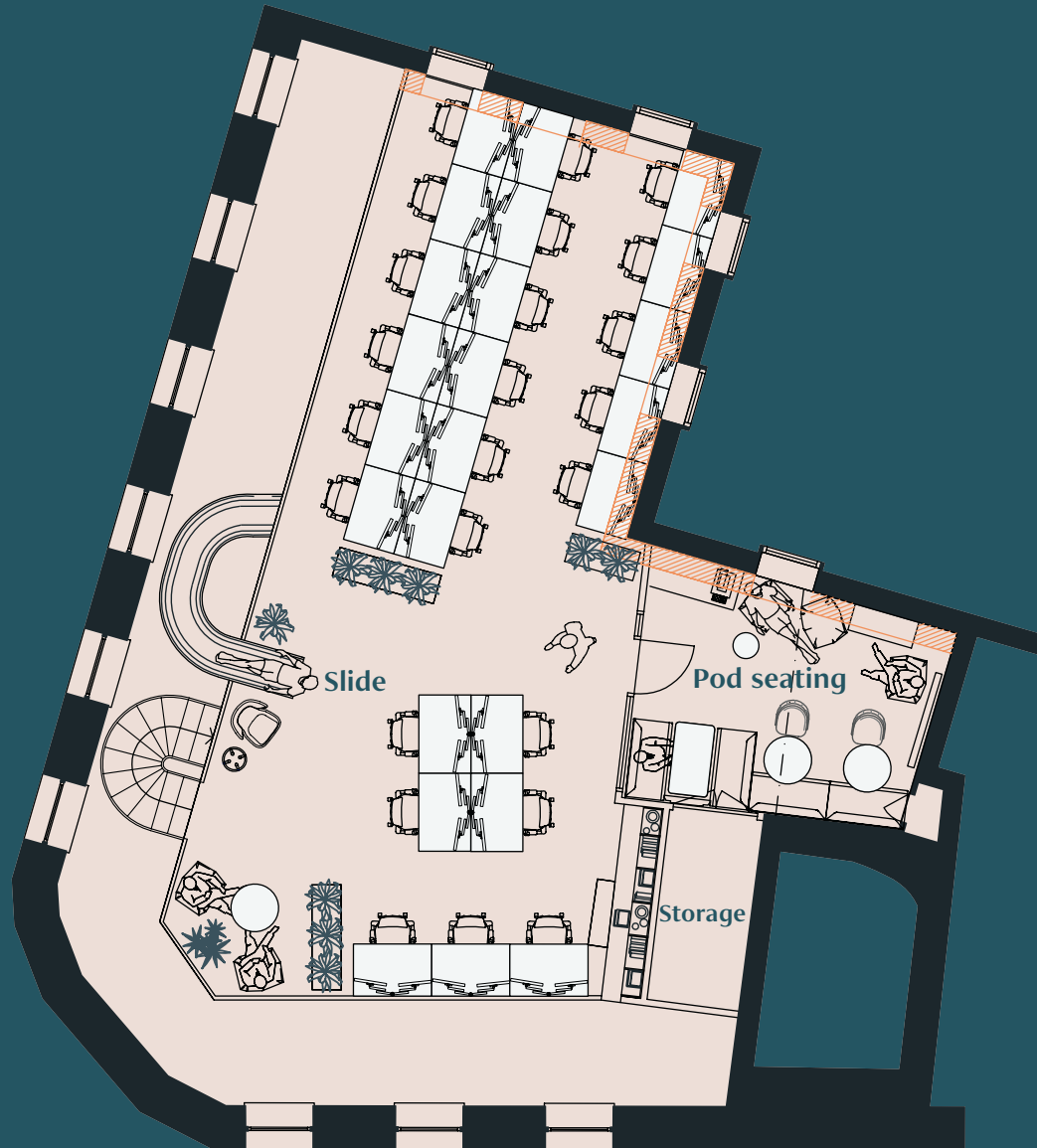
FLOOR 4* – Layout 2

1,457 sq ft / 135.4 sq m

- Workstations 20
- Meeting rooms (boardroom) 1
- Kitchen
- Break-out space

*Dual space. 4 & 5 Floors to be let together.

Floorplans are not to scale, are indicative only and subject to change.



FLOOR 5* – Layout 2
1,000 sq ft / 92.9 sq m

- Workstations 24
- Break-out seating area

*Dual space. 4 & 5 Floors to be let together.
Floorplans are not to scale, are indicative only and subject to change.