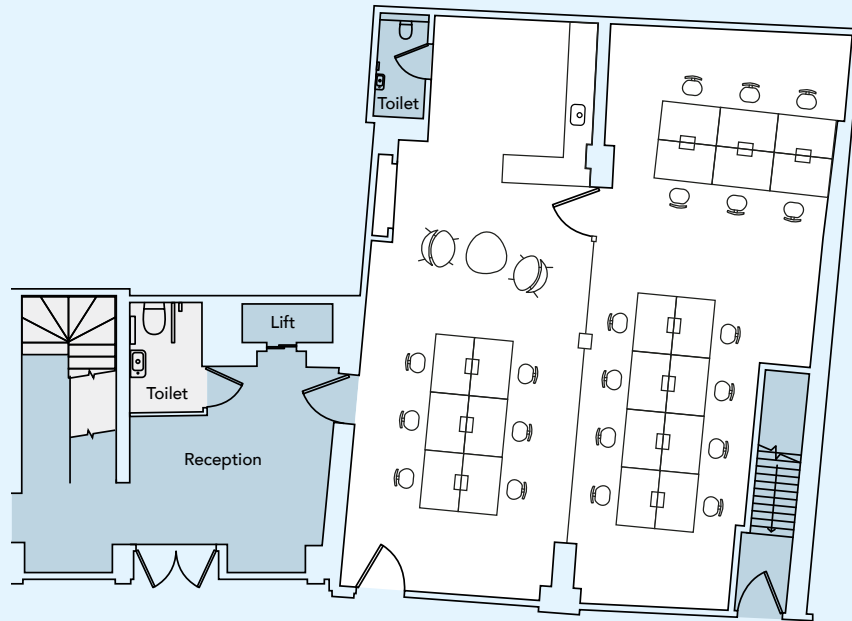


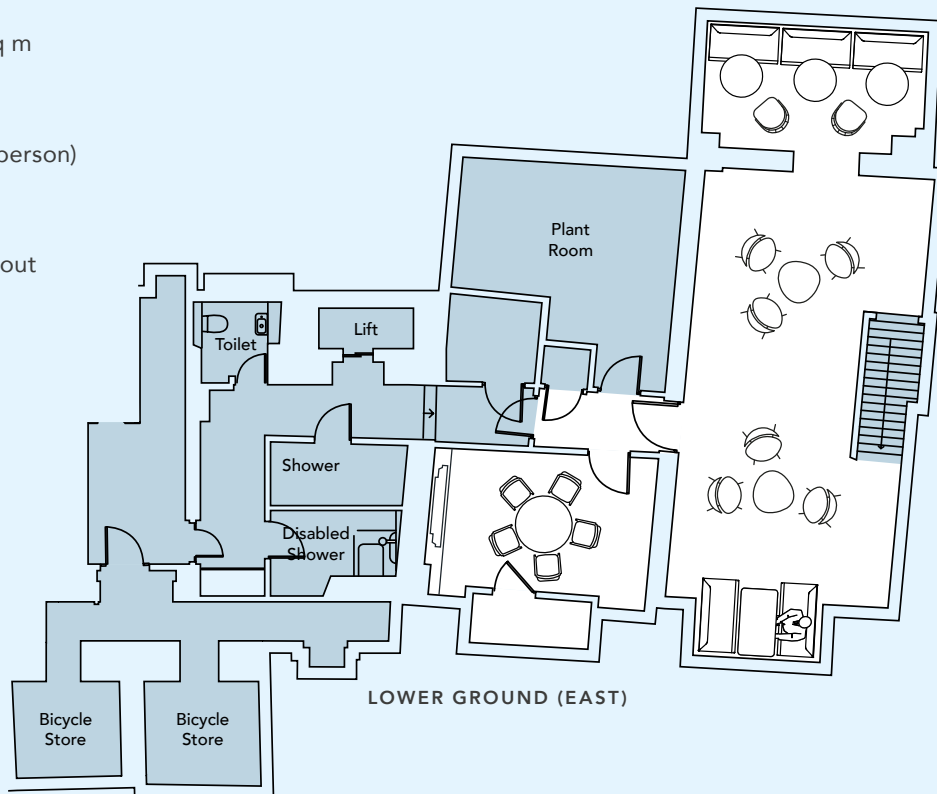
11 **CURSTOR** ST
LONDON EC4



GROUND (EAST)

LAYOUT

- ▶ 2,094 sq ft / 194.5 sq m
- ▶ Workstations 28–30
- ▶ Meeting room (6–8 person)
- ▶ Kitchen
- ▶ Collaborative break-out
- ▶ Self-contained with dedicated entrance



LOWER GROUND (EAST)



GROUND & LOWER GROUND FLOOR (EAST)



Misrepresentation Act 1967 – Whilst all the information in these particulars is believed to be correct, neither the agents nor their client guarantee its accuracy nor is it intended to form part of any contract. All areas quoted are approximate. May 2021