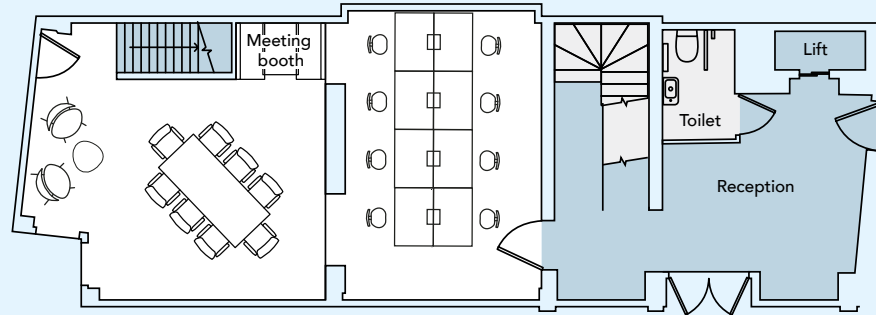
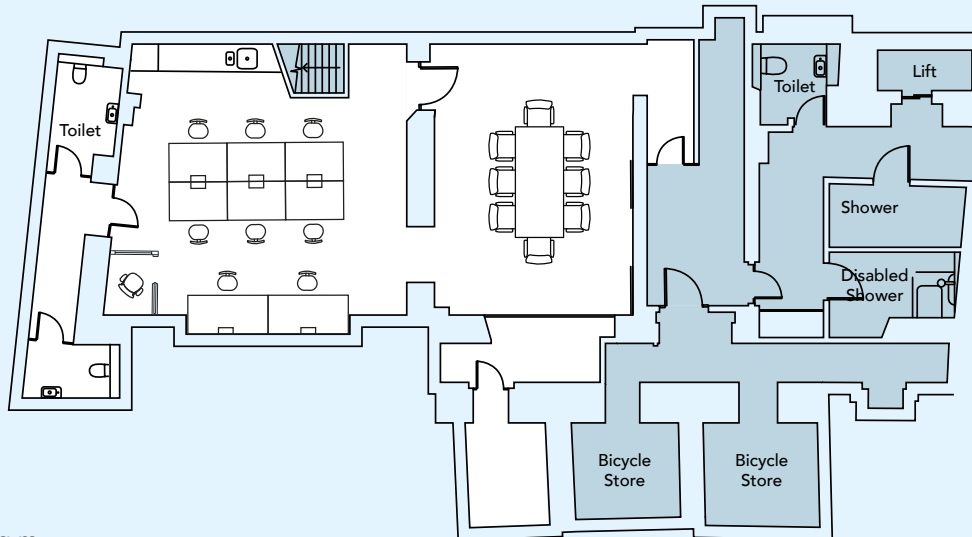


11 **CURSTOR** ST  
LONDON EC4



GROUND (WEST)



LOWER GROUND (WEST)

**LAYOUT**

- ▶ 1,269 sq ft / 117.9 sq m
- ▶ Workstations 15–20
- ▶ Meeting room (6–8 person)
- ▶ Kitchen
- ▶ Collaborative break-out
- ▶ Self-contained with dedicated entrance



**GROUND & LOWER GROUND FLOOR (WEST)**

